

HR, Hot Rolled Steel Coil

Hot rolled steel undergoes a rolling process that involves forming and rolling steel slabs into long, hot bands while heated at extremely high temperatures (typically over 1,700°F) above steels recrystallization temperatures.

Hot rolled steel sheet and coil are basic carbon steel products commonly used for applications in which dimensional tolerances and surface finish quality are not critical, such as: Agriculture Equipment, Automobile Accessories, Automotive Frames, Construction, Pipe and Tubular, Railroad Tracks, Strappings, Stampings, Transportation Infrastructure.

Grade Available	SPHC, SAE1006/1008, Q195, SS400, Q235, A36, S235JR, S275JR, Q345, Gr50, SPHT1/2, SM400,etc.
Standard Related	JIS G3101/3131/3132/3106, GB T700/1591, ASTM A36/A572, EN 10025-2,etc.
Sizes Available	Thickness:1.0~2.5mm Width:300~2000mm
Product Type	HRC for General use, for pipe-making, for Cold-rolling, for Welded Structure, HSLA, Checkered Sheet, etc.
Product Application	Raw Material for Construction & Engineering, CR Steel Production, Pipe Making, Steel Structure, Vehicle & Vessel Manufacturing,etc.



CR, Cold Rolled Steel Coil

Cold rolled steel is rolled at room temperature and then rolled again below its recrystallization temperature. This process enables better control over finished product shape, thickness, dimensions, and a more consistent finish.

Grade Available	SPCC,SPCD,DC01,DC03,St12,St13.CS/DS Type A/B,etc
Standard Related	JIS G3141, GB T5213, ASTM A1008, EN 10130,etc.
Sizes Available	Thickness:0.12~2.0mm Width:600~1500mm
Material Hardness	Full,1/2.1/4,1/8,or as per HRB Range.
Product Type	CRC for General Use,Black Annealed CRC,Fell Hard CRC,etc
Product Application	Raw Material for Coated Steel, Pipes, Furniture, Home Appliance,Automotive Industry,etc



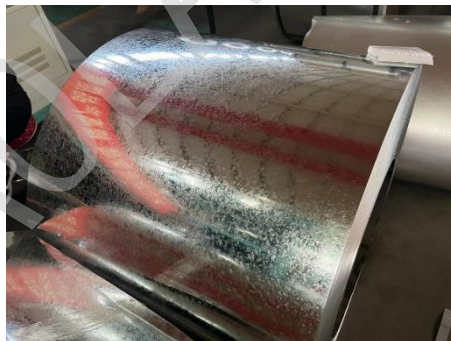
Main Optional grades and standards

Product Name	Grade	Yield Strength (Mpa)	Tensile strength (Mpa)	Elongation after breaking (%)
Martensitic high strength steel	CR780/980MS	≥780	≥980	≥10
Wet enamel	DC01-TC	≤260	270-370	≥35
	GT340-TC	≥340	≥400	≥22
Dry enamel	GTC1	≤220	270-350	≥38
Low-carbon steel	DC01	≤270	≤370	≥35
	DC03	≥190	≥270	≥41
Gapless atomic steel	DC04	≤165	≥270	≥43
	DC06	≤150	≥270	≥44

GI, Hot Dipped Galvanized Steel Coil

Galvanized steel, the cold rolled steel roll continuously immersed in the molten zinc plating bath, the surface fusion it a layer of zinc anti-corrosive materials in 470 degree Centigrade heat. it is a steel based composite material, effectively prevent the corrosion of steel, to extend the service life, with excellent corrosion resistance, good surface quality is conducive to deep processing, economical and practical.

Grade Available	SGCC, SGCH, SGHC, DX51/52/53D, St12, CS/FS, SGC340/400/440 SGH340/400/440, S220/250/280/320/350GD, SS33/40/50, etc.
Standard Related	JIS G 3302, GB T2518, ASTMA653, EN 10346, etc.
Sizes Available	Thickness: 0.12~3.0mm Width: 600~1500mm
Spangle Type	Zero Spangle, Mini/Small Spangle, Regular Spangle, Big Spangle.
Surface Treatment	Oiled, Chromated, Skin-pass, Matt/Bright, etc
Material Hardness	Full Hard (>HRB85). Medium Hard (HRB60-85), Soft (<HRB60), etc.
Product Application	Raw Material for Color-Coated Industry. Pipe-Making. C/Z Purlins, Decking Sheet, Corrugated Sheet, Household Appliance, Furniture Transportation Facility, etc.



Main Optional grades and standards

Product Category	Brand	Mechanical properties			Uses and characteristics
		Yield Strength MPa	Tensile strength MPa	Elongation %	
Soft	SPCC	260-300	350-400	30	Mechanical bite, general stamping, high corrosion resistance
	SPCD	210-260	280-350	40	
Full Hard	SPHC	≧ 450	≧ 700	-	Construction, good processing, high corrosion resistance
	Q195L	≧ 450	≧ 700	-	



GL, Galvalume Steel Coil

Galvalume (abbreviation:GL steel) is hot plating on the surface of steel plate with Al55%,Zn43.5%,Si 1.5% ,the surface is smooth,has a good resistance to atmospheric corrosion,heat resistant oxidation.

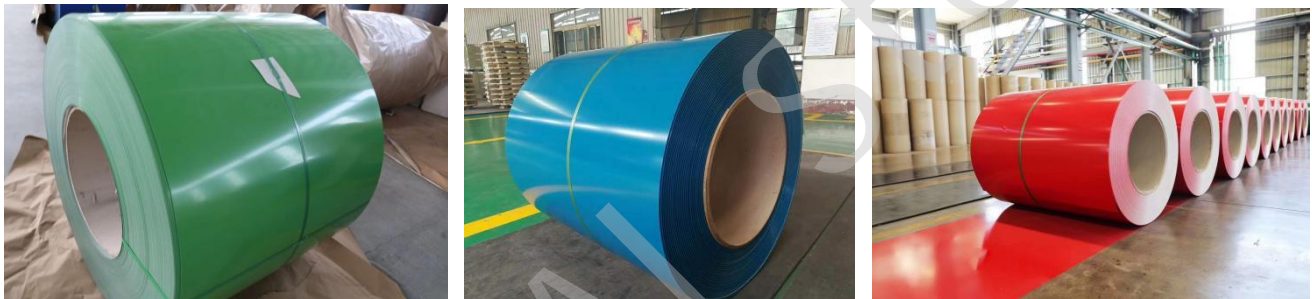
Grade Available	SGLCC,SGLCD,DX51/52/53D+AZ,CS/FS,SGLC340/400/440,S220/250/280/320/350GD+AZ,SS33/40/50,etc.
Standard Related	JIS G3321,GB T14978,ASTMA792,EN 10346,etc.
Sizes Available	Thickness:0.15~1.5mm Width:600~1500mm
Surface Treatment	Oiled, Passivated (Non-Cr/ Cr3+), Skin-pass, Matt ,Anti-finger print,etc.
Material Hardness	Full Hard(>HRB85), Medium Hard(HRB60-85), Soft (<HRB60),etc
Product Application	Raw Material for PPGL,Corrugated Sheet,Household Appliance, Agricultural facilities, Automotive Industry etc.



Product Name	Grade	Yield Strength (Mpa)	Tensile strength (Mpa)	Elongation after breaking (%)
Low-carbon steel	DX51D+AZ	≤360	≤440	≥20
	DX52D+AZ	≤260	300-360	≥28
Gapless atomic steel	DX53D+AZ	≤200	270-320	≥38
	DX54D+AZ	≤180	270-310	≥40
Structural steel	S250GD+AZ	≥250	≥330	≥19
	S350GD+AZ	≥350	≥420	≥16
	S450GD+AZ	≥450	≥510	≥14
	S550GD+AZ	≥550	≥560	/
Special material for keel	LG550GD+AZ	≥550	≥560	≥5

PPGI, Pre Painted Steel Coil

Pre Painted Steel Coil is based on galvanized coil, galvalume coil, zinc-aluminum-magnesium, aluminum-zinc-magnesium, aluminum-magnesium-manganese, stainless steel as the substrate, after surface pretreatment, using a roller coating method, coated with multiple layers of liquid paint, after baking Bake and cool. It uses polyester, silicon-modified polyester, high-weather-resistant polyester, polyvinylidene fluoride, epoxy, and high-sealing corrosion-resistant coatings. It has excellent durability, corrosion resistance, and moldability (formability). Products are widely used in household appliances, decoration, construction, automotive and other industries.



Type of coating	Recommended substrate type	Coating thickness (μm)	MEK	T bend	5%hydrochloric acid	5%Sodium hydroxide	Neutral salt spray	Acid salt spray	Alkaline salt spray	QUV-A	Common environment
Polyester (PE)	Z/AZ/ZM/AZM	≥20	≥100	3T	24 h	24 h	1000 h	/	/	1000 h	10 year
High weather resistance (HDP)	Z/AZ/ZM/AZM	≥23	≥100	3T	24 h	24 h	1500 h	/	/	1500 h	15 year
Silicon Reform (SMP)	Z/AZ/ZM/AZM	≥23	≥100	3T	24 h	24 h	1500 h	/	/	1500 h	15 year
Fluorocarbon (PVDF)	Z/AZ/ZM/AZM	≥25	≥100	2T	24 h	24 h	2000 h	/	/	3000 h	20~30 year
Polyurethane (PU)	Z/AZ/ZM/AZM	≥40	≥100	2T	24 h	24 h	720 h	/	/	1000 h	10~20 year
Hot film (VCM)	Z/AZ/ZM/AZM	≥100	/	0T	360 h	/	/	/	/	/	10 year
Color printing	Z/AZ/ZM/AZM	≥25	≥100	3T	24 h	24 h	600 h	/	/	1000 h	10 year
Reticulated, suede	Z/AZ/ZM/AZM	≥25	≥100	2T	24 h	24 h	1000 h	/	/	1000 h	10 year
High corrosion-resistant polyester (PE•Pro)	Z/ZM/AZM	≥25	≥1000	3T	120 h	120 h	2000 h	1500 h	1500 h	2000 h	15 year



Type of coating	Recommended substrate type	Coating thickness (μm)	MEK	T bend	5%hydrochloric acid	5%Sodium hydroxide	Neutral salt spray	Acid salt spray	Alkaline salt spray	QUV-A	Common environment
High corrosion resistance and weather resistance polyester (HDP•Pro)	Z/ZM/AZM	≥25	≥1000	3T	120 h	120 h	2500 h	2000 h	2000 h	3000 h	20 year
Super corrosion resistant super weather resistant polyester (HDP•Plus)	Z/ZM/AZM	≥30	≥1000	3T	360 h	360 h	4000 h	3000 h	3000 h	4000 h	25 year
High corrosion resistance fluorocarbon aluminum magnesium manganese (PVDF•Pro)	Aluminum magnesium manganese	≥25	≥1000	2T	240 h	240 h	10000 h	5000 h	5000 h	10000 h	50 year
Super corrosion-resistant nano-fluorocarbon aluminum magnesium manganese (PVDF•Plus)	Aluminum magnesium manganese	≥30	≥1000	2T	480 h	480 h	20000 h	10000 h	10000 h	15000 h	70 year
Centennial stainless steel fluorocarbon (PVDF•Plus)	Stainless steel	≥30	≥1000	2T	480 h	480 h	30000 h	10000 h	10000 h	15000 h	100 year
High corrosion-resistant epoxy back paint	/	≥12	≥100	4T	120 h	120 h	2000 h	1500 h	1500 h	/	/
Super corrosion-resistant epoxy back paint	/	≥20	≥100	3T	240 h	240 h	3000 h	2500 h	2500 h	2000 h	/

